

INDUSTRIAL FANS

THE COMPREHENSIVE RANGE



RESIDENTIAL FANS



HEAT RECOVERY



COMMERCIAL FANS



DUCTING ACCESSORIES



MORE THAN 60 YEARS' OF EXPERIENCE

Founded in 1955 by fan engineer Alexander Conner Wilson, who designed and invented the first Manometer. He went on to develop an original range of Measuring Instruments and marketed them under the brand of Airflow.

From these humble beginnings various applications were developed and are continued to be sold around the world. Even today the most sophisticated F1 racing cars rely on technology developed by Airflow Developments.

In 1965 a range of centrifugal fans and blowers were introduced making Airflow one of the founders in UK centrifugal fan manufacturing and therefore over the years, gained experience and became experts in their field.

With the success of the centrifugal fans a domestic extractor fan was developed and launched under the brand "Loovent" into the market, making Airflow one of the first companies in the UK to offer a modern, British Designed, Engineered, and manufactured, ventilation system to the consumer market.

Fan development continued and utilizing in house British design and engineering to the full in 2004 the Icon range of ventilation fans with its unique and patented Iris design was launched, and quickly became brand leader due to its efficiency and good looks.

With a market leading design and engineering team based at our High Wycombe headquarters, supported by an industry respected test facility Airflow has refocused its talents back on its core O.E.M. fan markets which is starting to emulate the success of the Airflow Ventilation Sectors.



UNITED KINGDOM

High Wycombe (Head Office)

Our founder started the business in 1955, just one mile from the current site, which has been Airflow's headquarters since 1960, co-ordinating our global activities.



GERMANY

Airflow has been serving ventilation products and air measurement devices to the German and European markets for over 50 years. Operating near Cologne, Airflow Germany has their own customer service, sales and after sales team.



CZECH REPUBLIC

Founded in Prague over 20 years ago, the Airflow Czech Republic team offer sales and servicing of ventilation products for the Eastern European market.



THE RANGE AVAILABLE FROM AIRFLOW

INCH BLOWER FAN

Centrifugal double inlet fan, with forward curve impeller. Direct drive class F motor. Ball bearings, IP54 protected. Single phase 220-240 V 50 Hz, three phase 220 - 240/380 - 415 V 50 Hz. Foot / face flange mounted. Industry standard dimensions. Suitable for medium air volume applications with low system pressures. General Ventilation & Air conditioning.

CASED INCH BLOWER EC

Centrifugal double inlet fan, with forward curve impeller. Direct drive EC motor, ball bearings, IP54 protected. EC motors offer greater efficiency low power output without drop in fan performance. ErP 2020 compliant. Square case mounted for great stability. Industry Standard Dimensions.

BELT DRIVE INCH BLOWER

Centrifugal double inlet fan, belt driven with axis outlets on both sides. Incorporating a forward curved tab lock impeller. Foot / face flange mounted. Suitable for high air volume applications at low to medium system pressures.

CASED BELT DRIVE INCH BLOWER

Centrifugal double inlet fan, belt driven, incorporating a forward curved tab lock impeller. Reinforced cube structure to support fan case. Suitable for high air volume applications at low to medium system pressures.

BELT DRIVE DOUBLE INLET BACKWARD CURVED FAN

Centrifugal double inlet fan, belt driven with axis on both sides. Incorporating a backward curved impeller. Foot / face flange mounted. Also available in reinforced cube structure for increased stability. Suitable for high air volume applications at medium to higher system pressures.

MEDIUM PRESSURE, CAST, CENTRIFUGAL FAN

Aluminium cast, centrifugal single inlet fan, direct drive class F with ball bearing motor. Single phase 230 V 50 Hz IP54 protected – three phase 230 / 400V 50 Hz. IP55 protected. Incorporating a cast aluminium backward curved impeller. Foot mounted. Anti-corrosion finish. Fan designed to transport air up to 250°C. Suitable for medium air volume applications at higher system pressure.

DIRECT DRIVE PEDESTAL MOUNTED FAN

Centrifugal single inlet fan, direct drive class F motors. Single phase 230V 50Hz – three phase 230 / 400V 50 Hz (up to 4 Kw) and 400 / 690 V 50 Hz above. IP55 protected. Incorporates a steel forward curved tab lock impeller. Anti-corrosion finish. Fan designed to transport air up to 250°C. Suitable for medium air volume applications at low/medium system pressures.

PLATE AXIAL FAN

Wall mounted plate axial fan. Sheet steel wall plate with inlet ring and wire guard. Direct drive class F motors with ball bearings IP65 protected. Single phase 220 - 240 V 50 Hz, three phase 220 - 240 / 380 - 415 V 50 Hz. 4 - 6 - 8 pole motors max temp. 60°C, 2 pole max temp. 45°C. Incorporates a 6 blade dynamically balanced polyamide / fiber glass impeller. Wall plate - anti-corrosive finish. Suitable for general ventilation applications for input of extraction.

LONG CASED AXIAL FAN

Inline long cased axial fan. Sheet steel tubular casing with terminal box mounted externally on the fan case, IP65 Protected. Direct drive class F motor with ball bearings. Single phase 220-240V 50Hz, three phase 220-240/380-415V 50Hz. 4-6-8 pole motors max air temp over motor 60°C, 2pole 45°C. Incorporates a dynamically balanced fiberglass reinforced impeller. Steel case anti-corrosive finished. Suitable for general ventilation applications where the fan is built into the duct system.

AXIAL ROOF FANS

Axial roof fan with galvanized steel base plate, steel rain deflector hood with anti-corrosive finish. Sizes 800 mm ø – 1000 mm ø fans come with a polyester rain deflector. Direct drive motor with a 6 blade dynamically balanced fiberglass impeller. (4 pole 1000 mm ø models incorporate and aluminium impeller. Motor as class F insulation and is IP54 protected. Single phase motors are 220 - 240V 50 Hz – three phase 220 - 240V / 380 - 415 V 50 Hz (up to 4 Kw) 400 / 690V 50 Hz above. Max operating temp 60°C.

A FAN FOR ALL APPLICATIONS



Is your application here?

Our fans have been successfully used in many diverse applications. The following is offered as a typical guide to our industrial fans and their applications. However, we are happy to advise on selecting the correct fan for your application.

HVAC

(Heating, Ventilating & Air Conditioning)



- **Air cleaners and fan/filter units**
Moving air through electrostatic, carbon, HEPA and other filter media
Single inlet and fans 40BTFL to 83F2WL double inlet



- **Air conditioning units**
Distribution of conditioned air
Generally double inlet types



- **Boiler combustion air fans (gas fired)**
Providing air or a gas/air mix to burners
40BTFL



- **Boiler/heater flue fans (gas fired) and gas fired overhead radiant tube heaters**
Assistance for exhausting the products of combustion to atmosphere
45BTFR-HT, 52BTX-HT, 71BTX-HT



- **Dehumidifiers (domestic & commercial)**
Distribution of dehumidified air in homes, timber warehouses etc
Typically impellers or fan parts sizes 27 to 71



- **Door curtains**
Warm air "curtain" at doorways, retail and industrial premises
Double Inlet fans, Duplex fans



- **Fan coil units**
Passing air over heat exchangers for heating, typically offices
Duplex fans

- **Flue dilution fans**
Dilutes combustion products from gas fired boilers to low level discharge
The flue dilution GBDF and SSDF ranges

- **General air handling units (AHU'S)**
"Central" plant for distributing air into a ventilation system, heated, filtered etc
Generally the ranges of double inlet fans

- **General ventilation**
Simple distribution of air through combination of ducts, grilles etc
Generally the ranges of double inlet fans



- **Heat recovery units**
Fans used for supply and extract. Supply fan collects heat from exhaust air



- **Industrial warm air heating**
Distribution of warm air, steam and gas fired heat exchangers
Double inlet fans



- **Oil burners**
Provides combustion air for oil fired boilers
Generally impellers only typically 45 and 52 sizes



- **VAV (variable air volume) units** Mixing of conditioned and re circulated air and distribution into offices
Double Inlet fans 71E2TIXR



Production/process equipment

- **Air conveying**
The transportation of lightweight product along ducts or channels
71 size impellers, ACF 160x62, 57DTLG90



- **Laminar Flow cabinets**
Provide uniform, clean air flow across work stations, electronics mfg. etc.



- **Packaging machinery**
Various functions inc. cooling shrink wrap and polythene bag inflation
33BTFL, 40BTFL

- **Plastic bottle manufacturing**
Cooling mass produced plastic bottles used in the soft drinks industry
45CTL, 52B7XL

- **Plastic extrusion machines**
Cooling extrusion barrels
45CTL, 52BTXL

- **Printed circuit board manufacture**
Cooling, testing and solder fume extract
52BXL

- **Tank heaters**
Blowing hot combustion product down tubes for indirect heating of liquids
52BTXL

- **Tunnel ovens**
Heating, cooling and mass produced products
57BXL

- **Vacuum forming machines**
Cooking large plastic components to speed up production cycle time
52BTXL

A FAN FOR ALL APPLICATIONS



Electrical, electronics & optical



- **Electronic component cooling, general**
To dissipate heat build up generated by components, within enclosures
21ATXL, 40BT Duplex and larger. Could be any fan size/type



- **Cooling of large motors & transformers**
Forced ventilation through machines to keep temperatures within limits
52BTXL, 52DS, 57DT



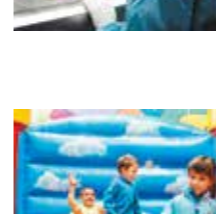
- **Photocopiers**
Lamp cooling
33BT or similar



- **Photographic processing equipment**
Drying film, litho plates etc.
45CTL, 52BTXL



- **Projection equipment, theatre & disco lighting equipment**
Condenser lens cooling for conventional and laser light
ACF 120X62, 45BTFL



- **Telecommunications; mobile phone transmitter cabins**
Ventilation of cabins containing transmitter electronics

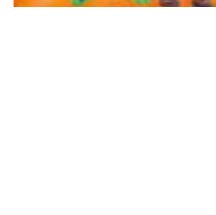
Laboratory & medical equipment



- **Environmental chambers**
Circulation of conditioned air
90G2WL, various impeller sizes



- **Laboratory ovens**
Hot air circulation
Radial oven impellers 45BFR hot fans

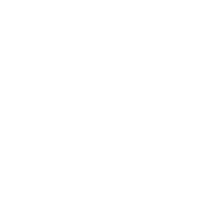


- **Medical isolation beds**
Supply of sterile air to highly contagious patients
40 Duplex - Single Inlet fans

Leisure



- **Bouncy castles**
Inflation and maintenance of pressure
Impellers for robust and portable fans, typically 52, 57 and 71 sizes - Single Inlet fans



- **Film & theatre special effects**
Smoke effect, flying effects etc. often used
Double Inlet fans

- **Swimming pool domes**
Inflates and maintains plastic dome over outside swimming pools
Double Inlet fans



Domestic equipment/appliances

- **Cooker fans**
Circulation of hot air around oven cavity
- **Commercial catering ovens**
Circulation of air warming and cooking ovens
26BTC, 52BTXL (hot)



- **Gas fire flue boosters**
Extract combustion products from "open" fires without a flue
40BTFL HT



- **Microwave ovens (commercial)**
Cooling of the microwave magnetron
26BTC, 40BTFL, 45CTL



- **Shower/steam cubicles**
Circulates warm air into shower
21ATXL Single Inlet fans

Miscellaneous



- **Air tables for the clothing manufacturing industry**
Provides an air cushion to allow multiple layers of cloth to be moved for cutting
64ES Stool fan / Double Inlet fans



- **Commercial catering ovens**
Circulation of air warming and cooking ovens
26BTC, 52BTXL (hot)



- **Commercial vehicle ventilation**
Part of the heating and ventilation system in truck cabs, coaches and vans
40B2T Duplex (less motor) 45 impellers
Single Inlet fans



- **Grain conditioning**
Permanent trickle ventilation in grain silos and "spot cooling" with a tube spear
Double Inlet fans and 52BTXL for the spot cooling



- **Hydraulic oil coolers**
Driving air through oil cooling heat exchangers on transport vehicles
Impellers only 52 to 76

- **Laundry equipment**
Ventilation of industry ironing boards
52BTXL fans, 71D impellers

- **Military**
Electronic cooling in sonar, radar equipment etc.
40B2T Duplex

- **Vehicle washers**
Cooling pump motors
57B impellers and cases - Single Inlet fans

INDUSTRIAL FANS



Flue Gas Dilution Fan



Product Code: GBDF
Product Code: SSDF

Flue dilution range of fans, suitable for boilers with max input rating up to 650Kw.
Built-in differential pressure safety switch ensures boiler shutdown in the event of fan failure or blocked flue/ interrupted power supply. Stainless steel versions available for high corrosive applications.
Dynamically balanced to DIN ISO 1940-Grade 6.3.

High Temperature Fan



Single Inlet fans range with Airflows up to 600 l/s and capable of handling hot air or the products of combustion up to 250°C.
Units are tailored to cover OEM customers specific needs.
With a built in intermediate cooling impeller that minimizes heat transfer to the motor and bearings ensuring long life.
Gas tight fan casing option available.

Small Single Inlet Centrifugal Fans



Single Inlet direct drive fan range with Airflows from 5.1 l/s up to 128 l/s with forward curve ladder strip impeller.
Single phase 120V 50Hz AC. Flange mounted.
Designed for general air moving applications, given low noise and low maintenance characteristics.

EC Single Inlet Centrifugal Fan



Product Code: SIEC

Single Inlet direct drive fan with forward curved tab lock impeller. 230V 50/70Hz high efficiency EC motor.
Airflows from 78 l/s up to 115 l/s.
External rotor motor.
Speed controllable 0-10V.
Suitable for general ventilation and industrial applications.

EC Double Inlet Centrifugal Fan



Product Code: DIEC

Double Inlet direct drive fan with forward curved tab lock impeller. 230V 50/60 Hz high efficiency EC motor.
Airflows from 165 l/s up to 1200 l/s.
External rotor motor.
Speed controllable 1-10V.
Suitable for low noise and space critical applications.

Medium Pressure, Cast, Centrifugal Fan



Product Code: SADCT

Aluminium cast foot/flange mounted. Centrifugal single inlet fan. Direct drive class F with ball bearing motor.
Single phase 230V 50Hz to IP54.
Three phase 230/400V 50Hz to IP55.
Aluminium backward curved impeller with anti-corrosion finish. Designed to transport air up to 250°C.

Double Inlet Forward Curved Centrifugal Fan



Product Code: 57FTQR
Product Code: 71ETIXR

Double inlet direct drive fan single phase 230V 50Hz AC fan. Flange mounted.
Airflows from 125 l/s to 235 l/s.
Designed for low noise low pressure, confined space applications. General ventilation and air conditioning applications.

Compact Dimensional Centrifugal Fan



Product Code: ACF

Single Inlet centrifugal fan, forward curved tab lock impeller, 230V 50Hz AC.
Airflow up to 83 l/s.
Flange mounted external rotor motor design. Specifically suited where space is at a premium.

Duplex Centrifugal Blower



Product Code: 40B2TX

Twin scroll forward curved double inlet fan, driven from a common motor with two drive shafts. 230V 50Hz AC.
Airflow up to 151 l/s.
Motor deck mounted, low noise, supplies a large air volume across wide discharge footprint Ideal for cooling applications. Flange mounted external rotor motor design. Specifically suited where space is at a premium.

Direct Drive Pedestal Mounted Fan



Product Code: SBFDCM

Centrifugal single inlet fan, direct drive class F motor.
Single phase 230V 50Hz. Three phase 230/400V 50Hz (up to 4Kw), and 400/690V 50Hz above 4Kw. IP55 protected.
Incorporates a steel forward curved tab lock impeller with anti-corrosion finish.
Fan designed to transport air up to 250°C.
Suitable for medium air volume applications at low/medium system pressure.

Plate Axial Fan



Product Code: PAFS

Wall mounted plate axial fan. Sheet steel wall plate and inlet ring with wire guard.
Direct drive class F motors with ball bearings.
Single phase 220-240V 50Hz. Three phase 220-240/380-415V 50Hz. IP65 protected.
4-6-8 pole motors max temp 60°C. 2 pole max temp 45 C. Incorporates a 6 blade dynamically balanced polyamide/fiber glass impeller.
Wall plate - anti-corrosive finish. Also available in roof fan orientation.

Long Cased Axial Fan



Product Code: CAF

In-line long cased axial fan. Sheet steel tubular casing with terminal box mounted externally on the fan case.
Single phase 220-240V 50Hz. Three phase 220-240/380-415V 50Hz. Class F motor with ball bearing, IP65 Protected. 4-6-8 pole motors max air temp 60°C. 2 pole motors 45°C.
Incorporates a dynamically balanced fiberglass reinforced impeller. Steel case anti-corrosive finished.

INDUSTRIAL FANS

Axial Roof Fans



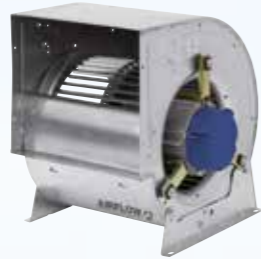
Product Code: ARF

Axial roof fan with galvanized steel base plate, steel weather protection hood with anti-corrosive finish. Fiber glass reinforced impellers, dynamically balanced.

Airflows from 303 l/s up to 12246 l/s. (4 pole 1000 mm Ø models incorporate and aluminum impeller).

Single phase 220-240V 50Hz. Three phase 380-415V 50Hz. Class F motor insulation and is IP54 protected.

Inch Blower Fan



Product Code: DDCM

Centrifugal double inlet fan, with forward curve impeller.

Single phase 220-240 V 50 Hz. three phase 220-240/380-415 V 50 Hz.

Direct drive class F motor insulation, ball bearings, IP54 protected. Foot/face, flange mounted to industry standard dimensions.

Suitable for medium air volume applications with low system pressures.

General Ventilation & Air conditioning.

Cased Inch Blower EC



Product Code: DDCME

Centrifugal double inlet fan, with forward curve impeller. Direct drive EC motor, ball bearings, IP54 protected.

EC motors offer greater efficiency low power output without drop in fan performance.

ErP 2020 compliant. Square case mounted for great stability. Industry Standard Dimensions.

Aventa Silent



Product Number: 9000358 - 9000361

Durable metal bodied low noise, high power in-line fan. Designed specifically to operate in areas where noise is an issue.

For standard duct sizes of 100, 125, 150 and 200mm diameter.

Suitable for ducted ventilation systems.

Airflows from 47 l/s up to 282 l/s.

Aventa



**Product Number: 9041089
Product Number: 9041090**

Part of the light commercial range provides a compact quiet and powerful remote mounted fan for 150mm ducted ventilation systems.

Can be supplied with timer overrun.

Suitable for light commercial bathroom and washrooms.

Airflow up to 144 l/s.

Aventa Turbo



Product Number: 9041360-9041365

Durable in-line motor mounted centrifugal backward curved impeller. Can be used for supply or extract air applications. Designed for ease of installation, can be spigot or foot mounted (Unit supplied with two feet).

For standard duct sizes of 100, 125, 150, 200, 250 and 315mm diameter.

Suitable for medium to large commercial bathroom and washrooms.

Airflows from 69 l/s up to 372 l/s.

COMMERCIAL MVHR

Belt Drive Inch Blower



Product Code: FMT

Centrifugal double inlet fan, belt driven with axis outlets on both sides. Incorporating a forward curved tab lock impeller.

Foot/face flange mounted.

Suitable for high air volume applications at low to medium system pressures.

Cased Belt Drive Inch Blower



Product Code: FCT

Centrifugal double inlet fan, belt driven, incorporating a forward curved tab lock impeller.

Reinforced cube structure to support fan case.

Suitable for high air volume applications at low to medium system pressures.

Belt Drive Double Inlet Backward Curved Fan



Product Code: BCT

Centrifugal double inlet fan, belt driven with axis on both sides. Incorporating a backward curved impeller. Foot/face flange mounted.

Also available in reinforced cube structure for increased stability.

Suitable for high air volume applications at medium to higher system pressures.

Flexi



**Product Number: 90000068 - 90000070
Product Number: 90000183
Product Number: 90001062**

Heat recovery and ventilation system with up to 93% thermal efficiency rated, low energy consumption, multi positional unit with integrated web server which will enable off site unit control via the Internet.

Passive house institute certified, VAV control compatibility, two year warranty.

A range of commercial MVHR units available ex stock with customisation capability on site.

Multi



Product Number: 90000790 - 90000800

Heat recovery and ventilation unit, delivering up to 93% thermal efficiency. Automatic 100% bypass with built in heating and cooling coils, BMS connection (Modbus is standard, optional BACnet or KNX).

Low energy Electronically Commutated (EC) fan.

A range of commercial units that you can design to suit your bespoke requirements with two year warranty.

Susurro



**Product Number: 90000915
Product Number: 90000921
Product Number: 90000927**


Decentralised high-quality heat recovery unit, ideal to meet the requirements of modern classrooms (BB101, BB93) and offices to improve the indoor air quality of the occupied space.

All units automatically adjust to changes in occupancy due to the integral CO₂ sensor. This sensor can detect CO₂ from only 370 ppm.

Thermal efficiency up to 90%, BMS connection and NFC technology with two warranty.

DOMESTIC FANS

iCON®



Market leader in domestic ventilation the unique iCON range gives you a multi option of how to control your fan, based on the individual's requirements.

The control modules available within this range makes this product the most versatile in the domestic extractor market.

QuietAir™



The whisper quiet QuietAir models have been designed to provide powerful extraction levels that exceed the requirements of the latest Building Regulations.

Available in various sizes and performances to suit the required applications of modern living.

iCONstant



Based on our very successful iCON brand, iCONstant has been developed to be the quietest dMEV fan available for toilet / bathroom and utility installation.

At just 10 dB(A), iCONstant is the quietest fan on the market. Designed to be extremely economical to run and costs less than a light bulb to run for a year.

ACCESSORIES

Variable Speed Fan Controller

Part No.
9041033 iCON 60



On/off switch

Part No.
90000540 Single Pole



1 Amp Stepless Speed controller

Part No.
9041565 Single phase fans



3 Amp Stepless Speed Controller

Part No.
9041569 Single phase fans



QuietAir 150 VS controller

Part No.
90000514 QT150VS



PIR Motion Sensor Timer

Part No.
51969702 c/w timer 3 - 30 mins



Electrical Humidistat On / Off

Part No.
9041570 Humidistat 30% - 90%



Single gang back box

Part No.
90000552 35mm deep



Double gang back box

Part No.
90000553 35mm deep



INSTRUMENT SOLUTIONS

LCA301 Anemometer kit



- UKAS certificate of calibration
- Compliant to testing requirements of Domestic Ventilation Compliance Guide 2010
- Aerodynamic design
- Volume flow in m³/h or l/s
- Velocity in m/s
- Self sealing hood 285 x 235 mm
- Tough ABS to take on-site knocks
- 2 year warranty

The LCA301 Vane Anemometer kits enables on-site measurement to be taken and air volumes calculated for balancing ventilation systems.

Simple one handed operation and a large clear LCD ensures that velocity or volume flow reading of air measurement is quick, reliable and accurate.

PAM Powered Air Flow Meter



- Complies with Method A - 'Best Practise' air flow measuring
- UKAS Certificate of Calibration
- Auto compensation of back pressure ensures excellent accuracy
- Volume flow in m³/h
- Temperature display
- Range of optional hoods

Best Practice' air flow measuring methodology for ventilation to accurately measure System 1, 3 and 4 ventilation rates.

The Building Regulations 2010, Statutory Instrument Part 9, paragraph 42, imposes a requirement that testing and reporting of mechanical ventilation performance is conducted in accordance with an approved procedure.

Compliance with this requirement by an assessed and registered 'Competent Person' should follow a 'Best Practice' process and adopt air flow measurement, Method A – The Unconditional Method - using a suitable UKAS certified measuring instrument. Generically referred to as a 'Zero Pressure Air Flow Meter' or 'Powered Flow Meter'.

Further information on this method is detailed in NHBC Building Regulations Guidance Note G272a 10/13 and BSRIA 'A Guide to Measuring air flow rates' document BG46/2015.



UNITED KINGDOM (head office)

Airflow Developments Limited
Aidelle House, Lancaster Road
Cressex Business Park
High Wycombe, Bucks. HP12 3QP.

Tel: +44 (0) 1494 525252
Email: info@airflow.com
Web: airflow.com

GERMANY

Airflow Lufttechnik GmbH
Postfach 1208
D-53349
Rheinbach, Germany

Tel: +49 (0) 2226 92050
Email: info@airflow.de
Web: airflow.de

CZECH REPUBLIC

Airflow Lufttechnik - Praha
Hostynska 520
10800 Praha 10
Prague, Czech Republic

Tel: +42 (0) 2747 72230
Email: info@airflow.cz
Web: airflow.cz